



Welcome EDAP Delegates

parkes.nsw.gov.au



Acknowledgment of Country

Parkes Shire is part of the Wiradjuri nation - the largest Aboriginal territory at the time of European settlement. Parkes Shire Council acknowledges the Wiradjuri people who are the Traditional Custodians of the Land and pays respect to the Elders both past and present of the Wiradjuri nation.

The Wiradjuri are the largest group in central New South Wales (NSW) by area and population, with lands stretching from Coonabarabran in the North to the Great Dividing Range and out to Western NSW, encompassing one fifth of NSW and were known as the people of the three rivers: the Wambuul (now known as the Macquarie River), the Galari (the Lachlan River), and the Marrambidya (the Murrumbidgee River).

The Wiradjuri people lived in harmony with the Country, they believed they didn't own the land, but they were responsible for looking after it. The Gugaa (Goanna) is the overarching totem for the Wiradjuri Nation. It is the symbol that connects all people, past and present, of Wiradjuri land.

We recognize and respect their cultural heritage, beliefs and continuing connection with the land and rivers and recognise the resilience, strength, and pride of the Wiradjuri community.



The background features several large, overlapping, semi-transparent green geometric shapes. On the left, a thick, curved line forms a partial circle. In the upper right, a series of lines radiate from a single point, creating a fan-like or arrow-like shape. Another thick, curved line is visible in the lower right quadrant. The overall aesthetic is clean and modern.

Scaling for growth

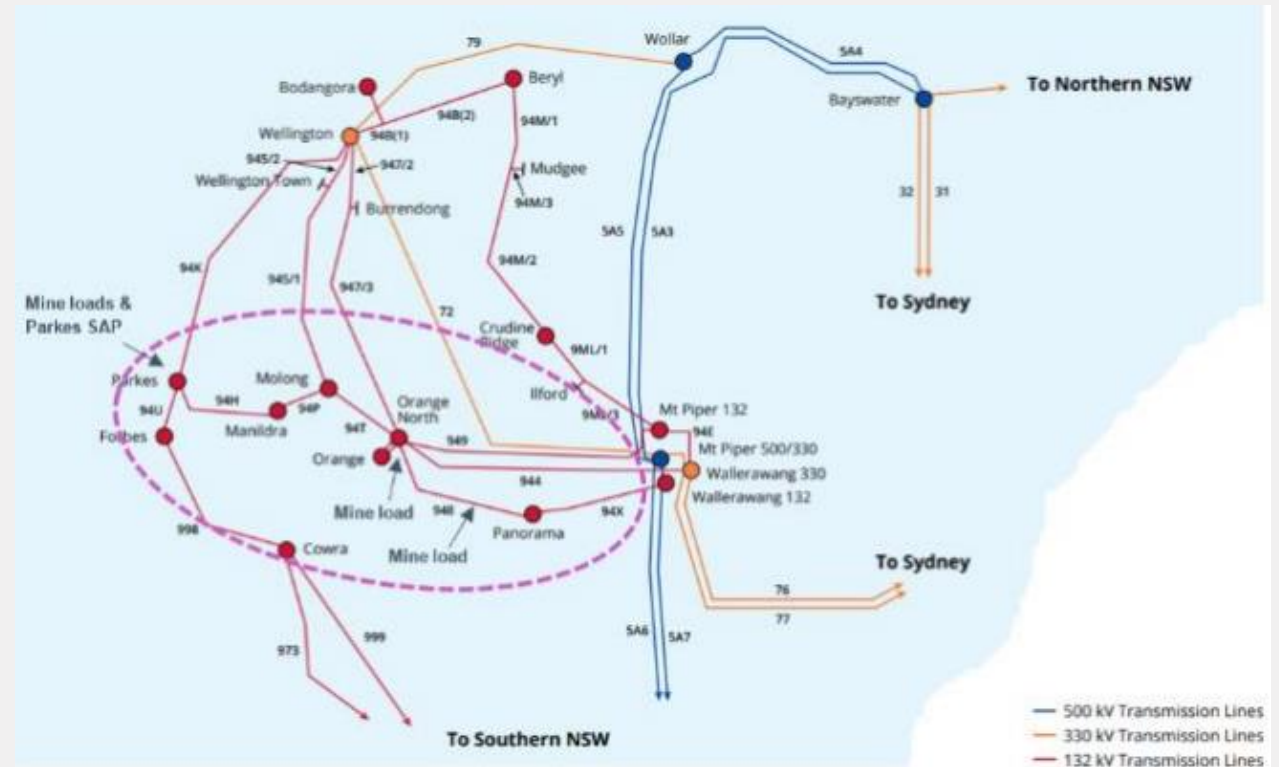
Energy

Solar Energy

- Parkes Solar Farm - 66MW for 26,800 homes
112kT CO2
- Goonumbla Solar Farm - 75MW for 45,000
homes 140kT CO2
- Quorn Park – 80 MW Solar Fram and 30MW
BESS

Energy Security

- 50 MVAr Grid scale Battery
- Transgrid - Battery Energy Storage Systems
installed at Parkes substation, 50 MVAr of
dynamic reactive support by 2025 to manage
voltage variations during high demand
periods.
- Ridgely Creek Battery Energy Storage System
130 MW / 260 MWh BESS 10km west of
Parkes



Energy security map



Water and Sewer

Parkes Water Security Program

Parkes Shire Council is upgrading existing water infrastructure and adding additional water supply assets to preserve, protect and sustainably manage our key water sources.

Infrastructure upgrades:

- Lachlan River Pre-Treatment Plant
- Raw Water Storage Lagoon
- Lachlan River Intake Augmentation
- New Pump Stations
- Lachlan Pipeline Duplication
- Solar Energy Systems
- Additional Bore and Bore Refurbishments



Rail Transport

Ports

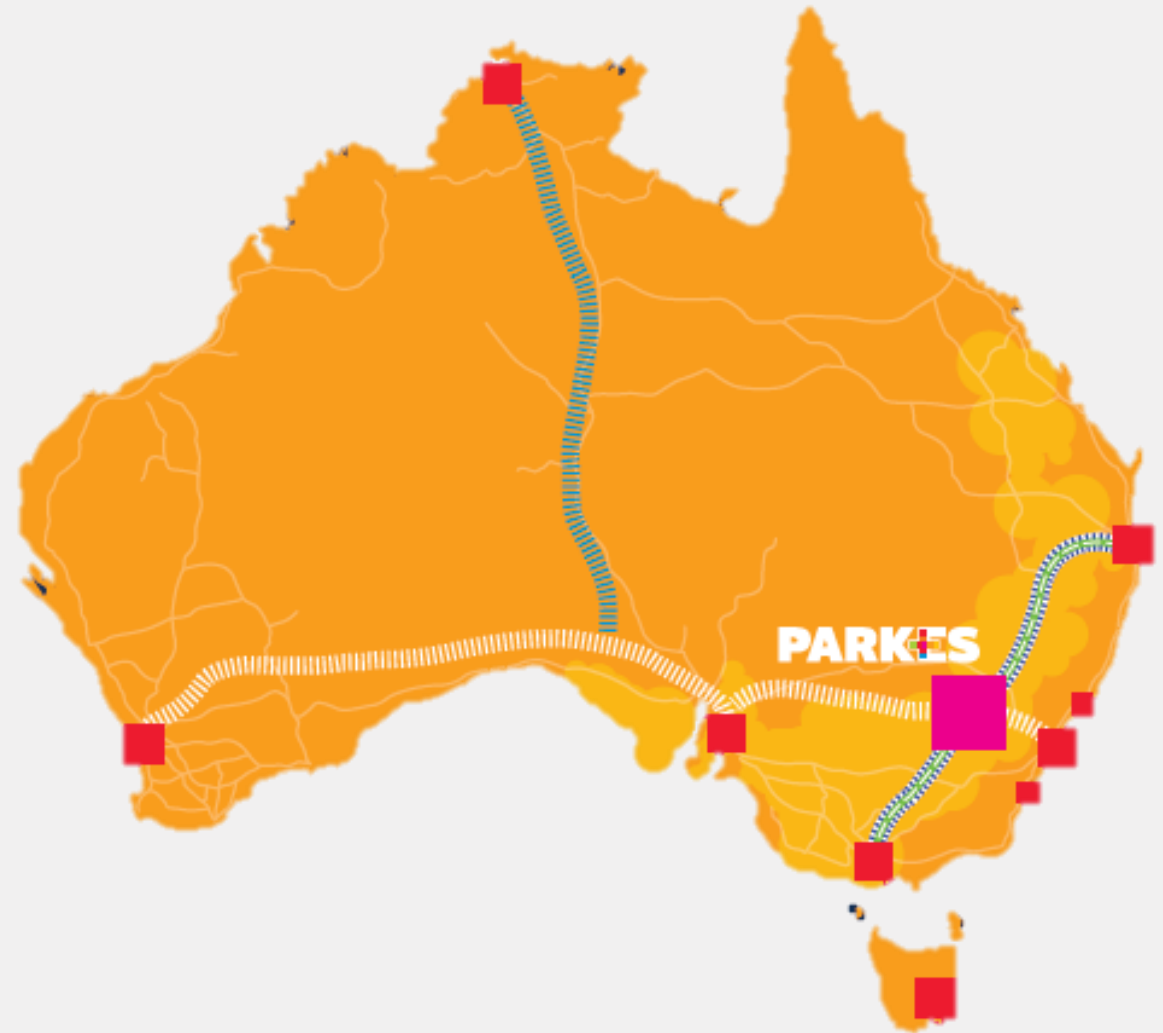
Sydney (Port of Botany)
Newcastle (Port of Newcastle)
Brisbane (Port of Brisbane)
Melbourne (Port of Melbourne)
Wollongong (Port of Wollongong)
Adelaide (Port of Adelaide)
Darwin (Port of Darwin)
Perth (Port of Fremantle)

Rail

8 hours
10 hours
18 hours
12 hours
10 hours
16 hours
45 hours
62 hours

Road

5 hours
6 hours
11 hours
8 hours
5 hours
12 hours
48 hours
48 hours



Housing

Parkes Housing Strategy

A staging framework has been developed to help guide the release of land for future housing growth in the Parkes urban area.

The staging framework gives priority to areas that are closest to the existing urban fringe or in areas which would allow for the practical, efficient and cost-effective augmentation of infrastructure, services and utilities necessary to service those areas.



Housing

Middleton Master Plan

Priority Area 1 from the Housing Strategy with the activation of 500 lots with a mix of social, affordable and private dwellings.

The development recognizes variation of lot sizing, housing typology and incorporates extensive pedestrian networks, destination park and combination of passive and active recreation areas



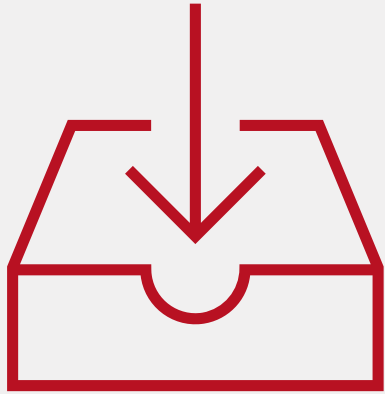
Health

Parkes Health Precinct Masterplan

The masterplan seeks to create the opportunity for health-related services to establish in close proximity to the new Parkes Hospital, over the coming decades.



Workforce



1.6%

Parkes has a low unemployment rate of 1.6%, 2 per cent lower than the national average.



70,000

The Parkes employment catchment area provides a total workforce population of over 70,000.



34%

34% of Parkes' local workforce holds a certificate level qualification, 12% higher than the NSW average.





Liveability

Close to Home



86%

5,126 of the 5,919 people who work in Parkes Shire, also live in the area.



9

Parkes draws a workforce from 9 of our neighbouring Local Government Areas.



Affordable Housing



\$431,000 ⁽¹⁾

Parkes region median sales price compared to the Australian national median sales price of \$760,000 ⁽²⁾



\$430 ⁽³⁾

median asking rent for houses in Parkes compared to \$600 ⁽⁴⁾ for the Australian national median house rent.



(1) realestate.com.au House price guide, March 2023 to February 2024, (2) PropTrack Home Price Index Report January 2024, (3) realestate.com.au House price guide, March 2023 to February 2024,

(4) PropTrack Rental Report December 2023 Quarter



Events



Parkes Elvis Festival



Trundle ABBA Festival



Community Events



Education



Early Childhood

7 childcare centres operate within the town of Parkes.

Construction has begun on a new childcare centre.



Primary and Secondary

7 Primary schools within the Shire, 1 High school, 2 K-12 schools and an Independent boarding school in neighbouring Forbes with 6 buses commuting daily.



Tertiary and Adult Learning

Country University Centre campus in Parkes, Parkes TAFE and 3 Charles Sturt University Campuses within 2 hours of Parkes.



TAFE NSW – Parkes Campus

TAFE NSW Parkes provides training programs to meet the community's needs, giving graduates suitable skills and qualifications for successful placement in the local workforce.

The campus specialises in aged care, business, computing, children's services, foundation skills, hospitality, library information services, community services, and welding.

Students are provided with hands-on experience in an environment that reflects real workplaces, using the same equipment and latest technology used by industry.

The campus provides a relaxed and convenient place to study, with student services including library services, counselling, online study help, disability support, Aboriginal support, study pathways and career advice.



TAFE NSW – Parkes Campus



Country Universities Centre – Parkes Campus

The Parkes Country Universities Centre (CUC) is a secure space for students to study within the Shire.

The Centre provides 24-hour access for university students at an online tertiary institution across Australia, allowing studies to utilise the following:

- a dedicated quiet study room with computers and space to bring personal devices to work on;
- tutorial rooms for seminars, tutorials, workshops, exams and group work; and
- space for student collaboration and break out, including kitchens and outdoor spaces.

Beyond providing study spaces for university students, CUC supports prospective and current students, ensuring students can maximise their university success.



Country Universities Centre – Parkes Campus



Connectivity

Parkes Regional Airport

Parkes Airport is a key gateway for Parkes and surrounding residents. Regional Express operates two return flights to Sydney daily, with over 28,000 passengers during the 2022-23 financial year.

Orange and Dubbo Regional Airports

Parkes is situated within 90 minutes of nearby regional airports in Orange and Dubbo, shoring up broader connectivity options.

Dubbo Airport annually connects 180,000 passengers to Sydney, Brisbane, Melbourne, Broken Hill, Walgett, Bourke and Lightning Ridge. Orange Airport connects 75,000 passengers to Sydney each year, with direct flights also available to Brisbane.



Parkes Regional Airport



The background features several large, overlapping, semi-transparent red geometric shapes. These include a large curved line on the left, a long horizontal arrow-like shape pointing right, and several other angular, arrow-like shapes pointing towards the right. The overall aesthetic is modern and minimalist.

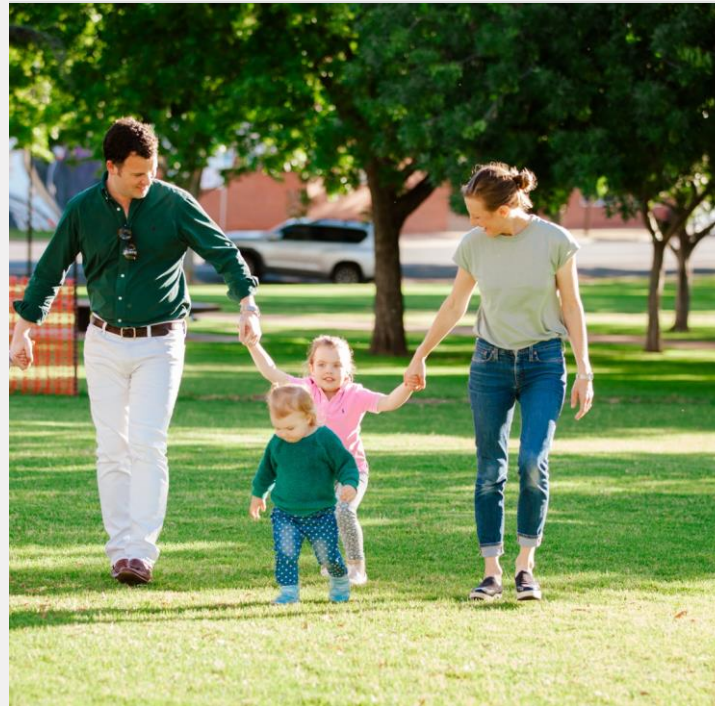
Council investment

Strategies and plans



Parkes Liveability Strategy

Parkes Shire Council recently undertook a liveability strategy to ensure future projects centre around enhancing the liveability of the Shire.



Greenspace Masterplan

Over 50 green spaces will be reimaged in Parkes, encouraging a sustainable and inclusive roadmap for green recreation.



Spicer Oval Caravan Park Redevelopment

Evaluation of future uses will identify appropriate short and long-term accommodation options.



Recently completed works



Lower Clarinda Street Revelation Works

Beautification works have been undertaken in lower Clarinda street.



Trundle Main Street Upgrades

Beautification works are currently being undertaken in the village of Trundle.



Cooke Park Pavilion

Cooke Park multipurpose facility was completed in 2021, allowing additional space for community events and functions.



Lions Park Playground upgrades

Project complete July 2023

The Lions Park playground upgrades have provided a regenerated space for locals and visitors to enjoy, fostering a sense of community by providing a space for leisure, recreation, and social gatherings.

This project has turned Lions Park into a play paradise where kids can enjoy the 25m double sky-rider (flying fox), a multi-play Sky Tower, a quartz rock climbing block, a swing set with an inclusive seat, a 2.3m carousel that can accommodate a wheelchair, three trampolines placed in the ground, a balance trail, and a junior multi-play unit.

The Australian Government and Parkes Shire Council jointly funded the program.



Lions Park



Kelly Reserve Splash Park

Project underway

The new splash park will enhance the Kelly Reserve precinct as a social hub and gathering space, providing an entertaining and engaging space for the community and visitors to Parkes.

The play space design is inspired by the topography of the Lachlan catchment and its rivers, lakes, dams, weirs, and bores. This splash park includes a splash pad, water fountains, wide bridges, and trickling streams, ensuring that people of all ages and abilities can enjoy it.

Construction at Kelly Reserve is on schedule, and the water play space base works are progressing. The water place space construction is on track to be completed in mid-2024.



Kelly Reserve Splash Park Concept Designs



Lake Endeavour

Project underway

Lake Endeavour will become the first developed natural water location for recreational use in the Parkes Shire. The new development will enable locals and visitors to enjoy the fantastic natural beauty of Lake Endeavour from late 2024.

The project will deliver safety upgrades and install new recreational infrastructure to encourage people to get active on, around, and in Lake Endeavour.

The floating safety buoys were installed in late 2023, and construction of the universal access composting toilets and the floating walkway will start in mid-2024.



Lake Endeavour



Parkes Wetlands

Project underway

Parkes Shire Council is currently transforming the town's old maturation ponds into crucial habitats for a range of native animals while creating a space for residents to enjoy.

The first stage of the project, completed in 2023, included earthworks to convert the old treatment ponds into a hydrologically complex, naturalistic, and functional habitat capable of supporting a diverse range of native fauna and flora.

The next stage of this project will include the construction of a gravel pathway around the wetlands, which will facilitate access to the site for people of all abilities and recreational activities.



Parkes Wetlands





Private investment



Inland Rail

Construction of the inland rail progresses.



Regional Express

Regional Express operates daily flights between Parkes to Sydney daily.



Evolution Mining Northparkes Operation

Northparkes mines expansion next lift of \$500 million is awaiting investment signoff.





Solar Farm Developments

Parkes Solar Farm and Goonumbla Solar Farm are now operational.



Special Activation Precinct Gateway

\$35 million project will be undertaken by Stevens Group.



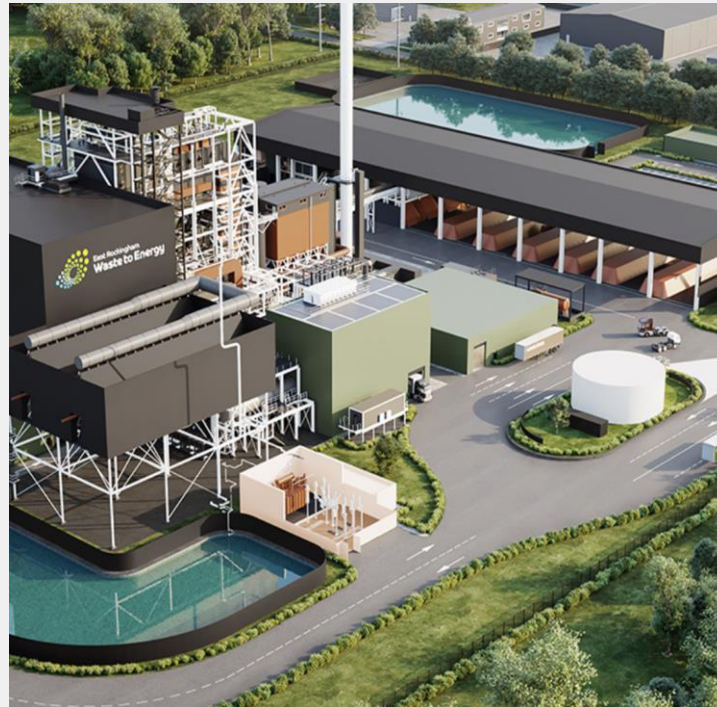
Parkes Newell Highway Bypass

\$200 million project progressing.





Brightmark Advanced Plastics Renewal Facility
\$280 million project has been announced.



Energy from Waste
\$750 million project has three shortlisted consortia.



Masterpet
The \$80 million stage one project is now complete, with future expansion planned.



Thank you

Parkes Shire Council
2 Cecile Street (PO Box 337) Parkes NSW 2870

T 02 6861 2333
F 02 6862 3946

council@parkes.nsw.gov.au
parkes.nsw.gov.au

